

Kiessler Architekten

——→(www.kiessler.de)

Wohnungskonferenz

Rischart

Theresienhöhe



Kiessler Architekten

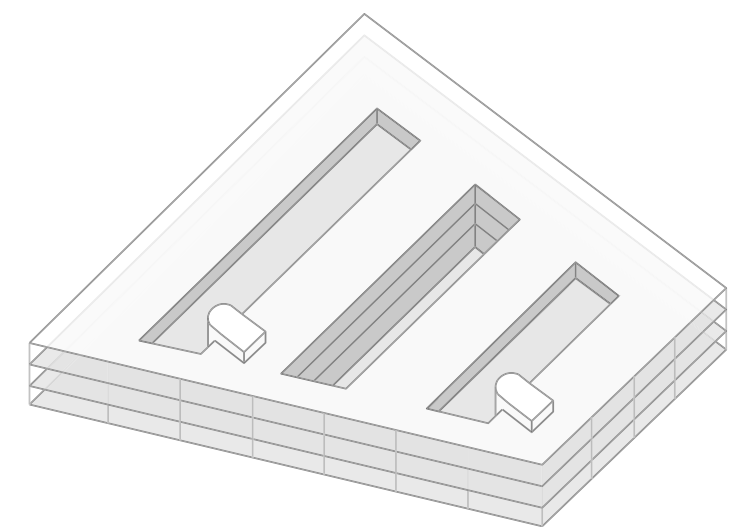
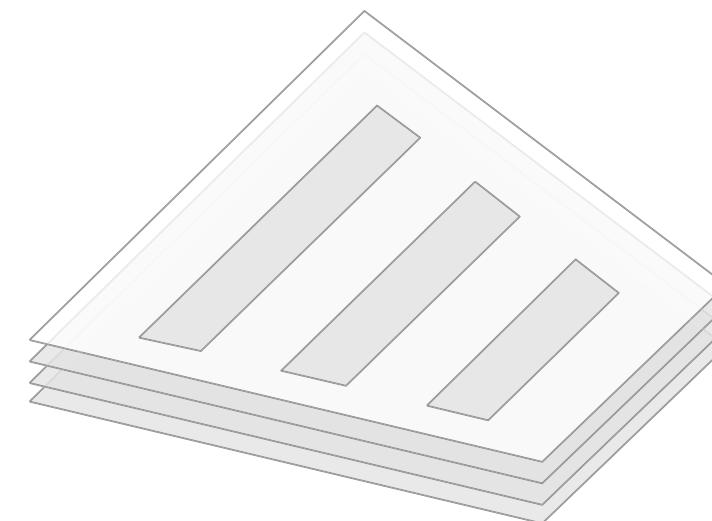
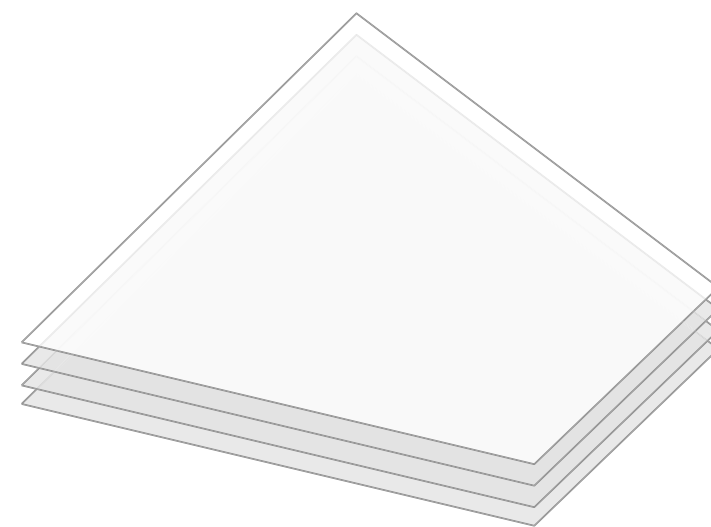
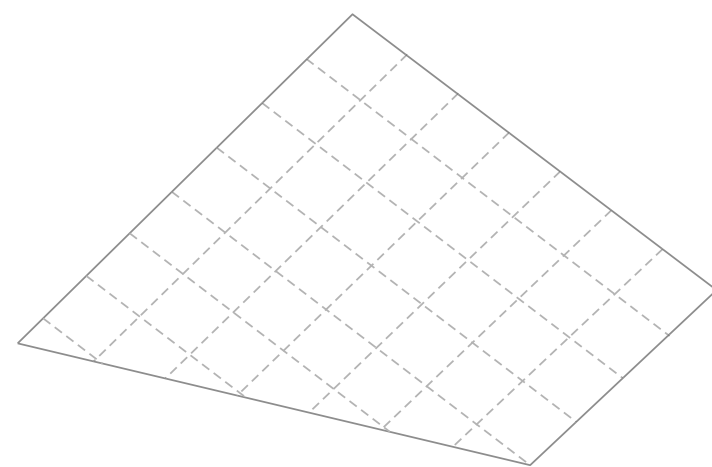
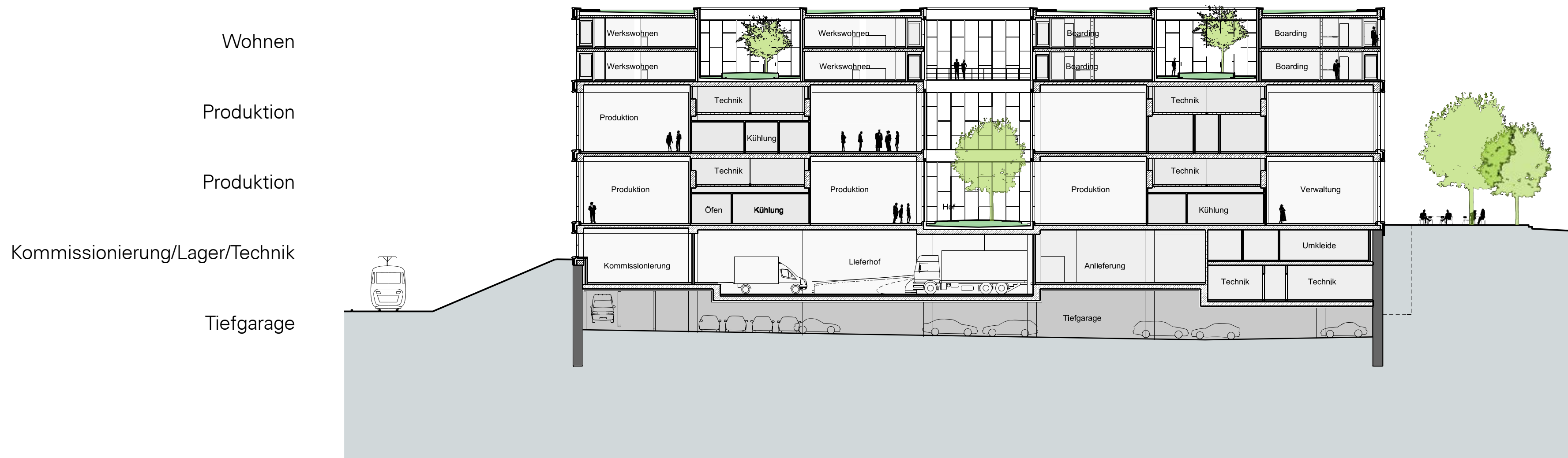
Regionale Wohnbaukonferenz - Rischart's Backhaus

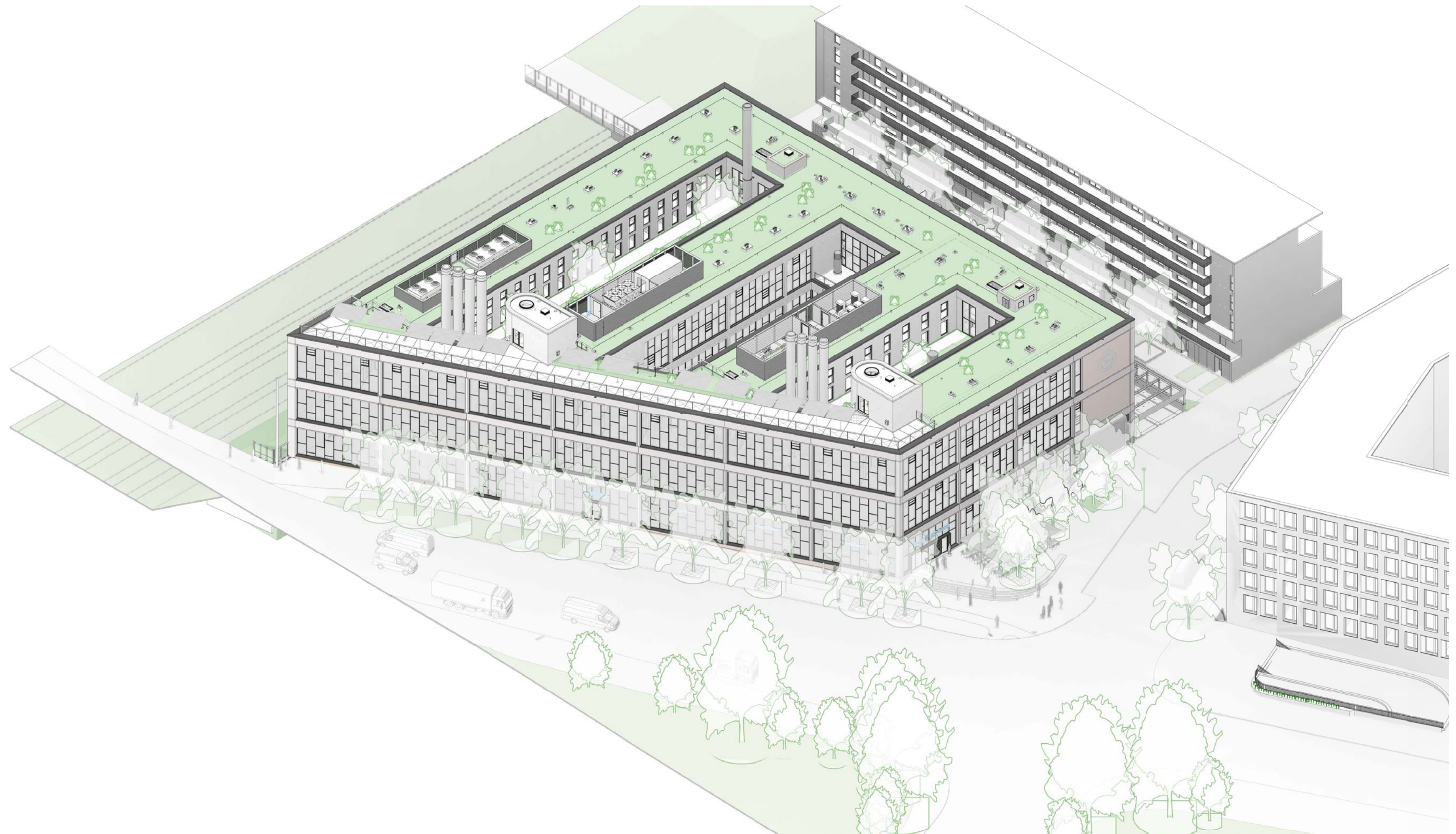


Kiessler Architekten



Regionale Wohnbaukonferenz - Rischart's Backhaus

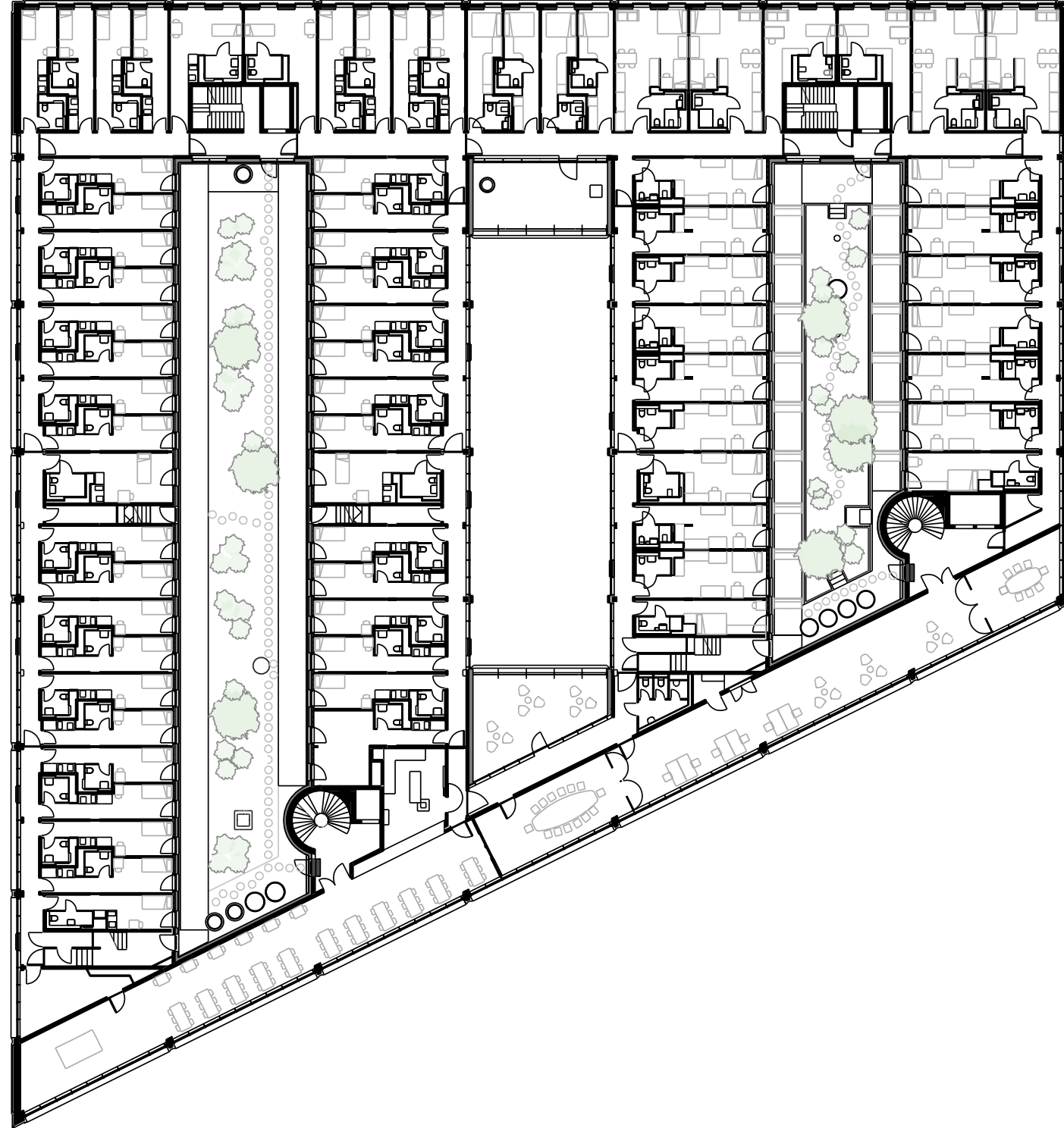






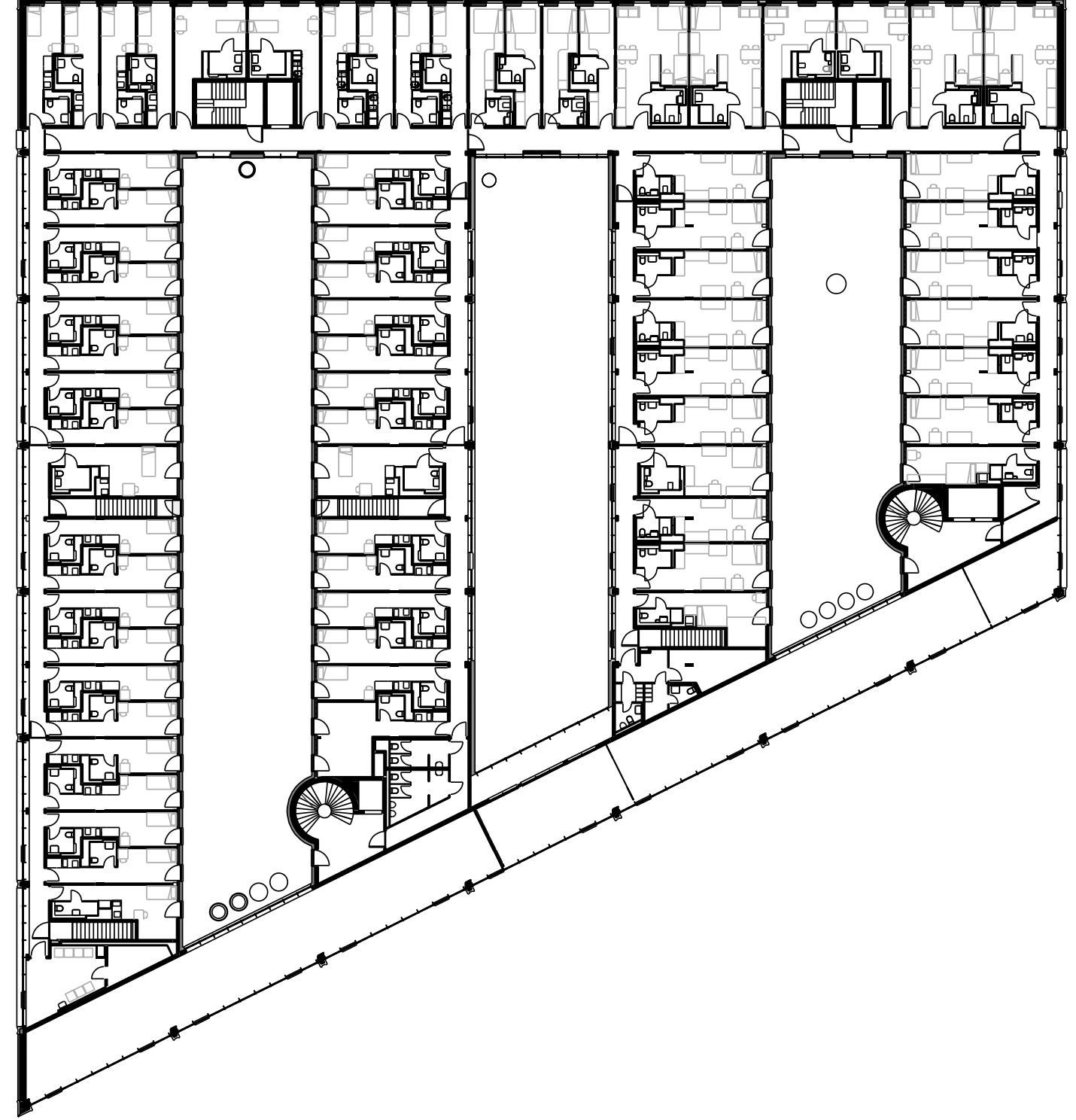
Kiessler Architekten

Regionale Wohnbaukonferenz - Rischart's Backhaus



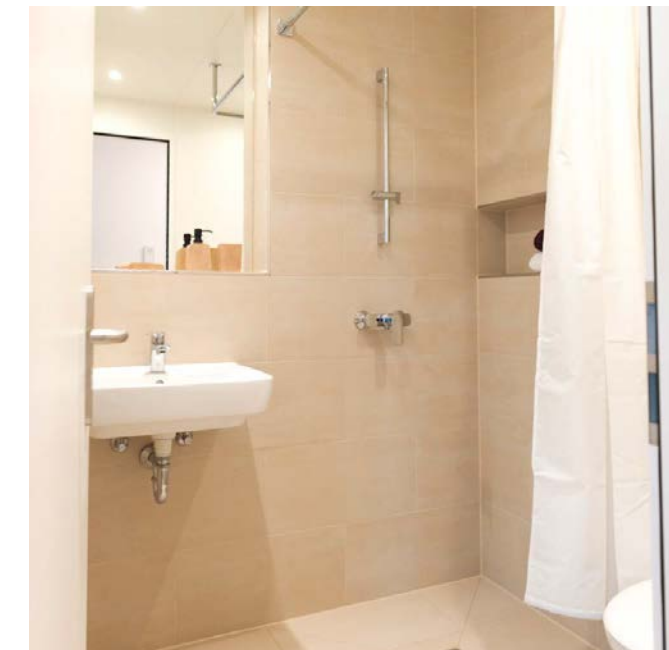
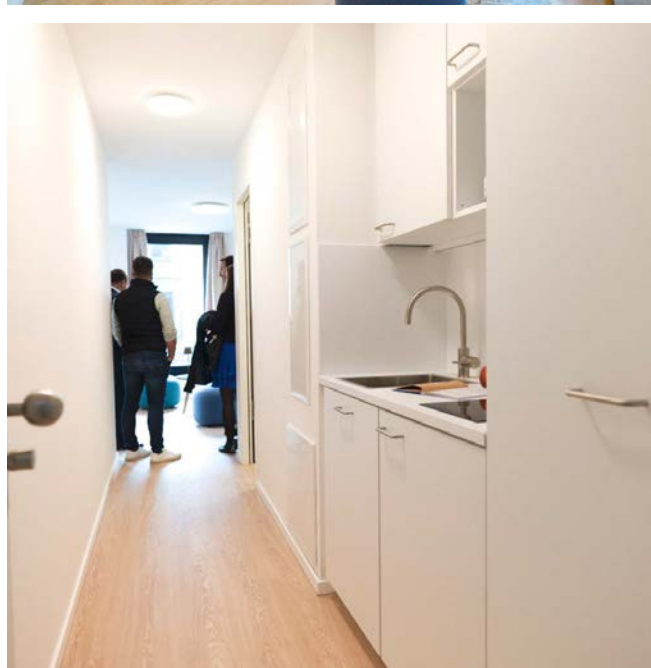
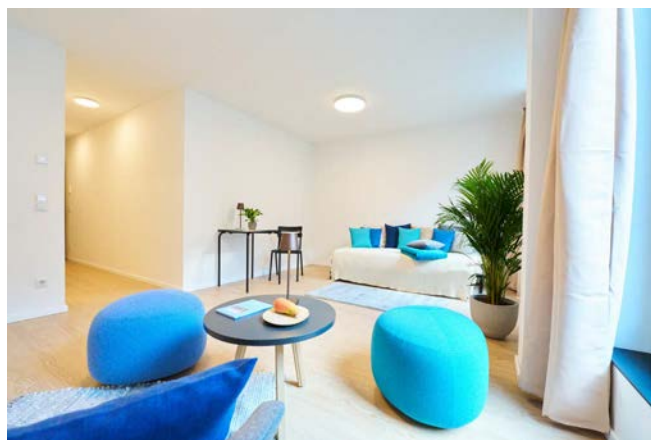
4. Obergeschoss

Kiessler Architekten



5. Obergeschoss

Regionale Wohnbaukonferenz - Rischart's Backhaus



BGF gesamt
ca. 24.000m²

Bruttorauminhalt
ca. 105.000m³

Bäckerei
ca. 7.500m²

Cafe, Shop, Ausstellung
und Akademie
ca. 550m²

Boardinghouse / Hotel
ca. 4.000m²

Wohnen
ca. 3.500m²

Boardinghouse / Hotel
84 Zimmer, 200 Betten

Werkswohnen
100 Wohnungen
17m² - 18m²
19m² - 20m²
21m² - 23m²
26m² - 34m²

Tiefgarage
110 Stellplätze

28x

29x

31x

12x





Kiessler Architekten

Regionale Wohnbaukonferenz - Rischart's Backhaus